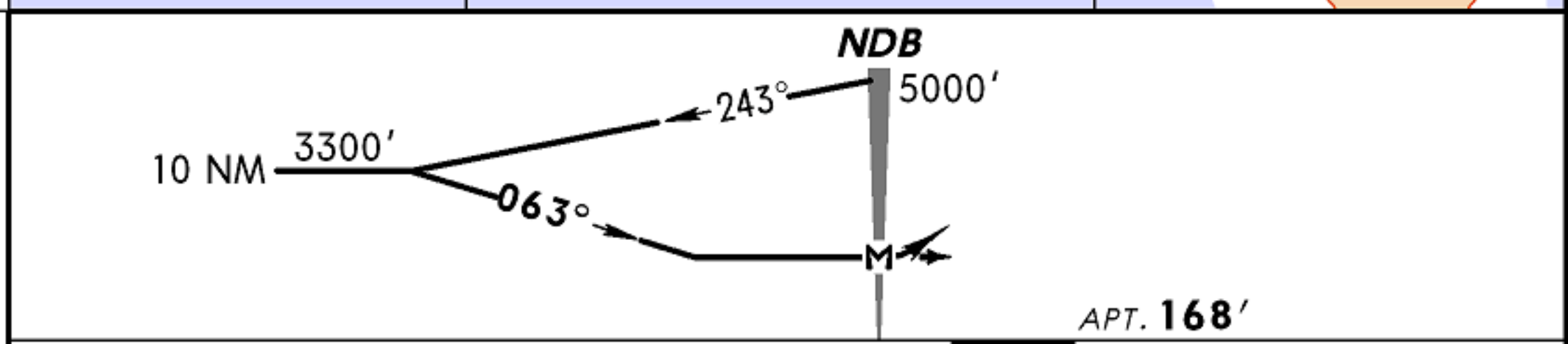
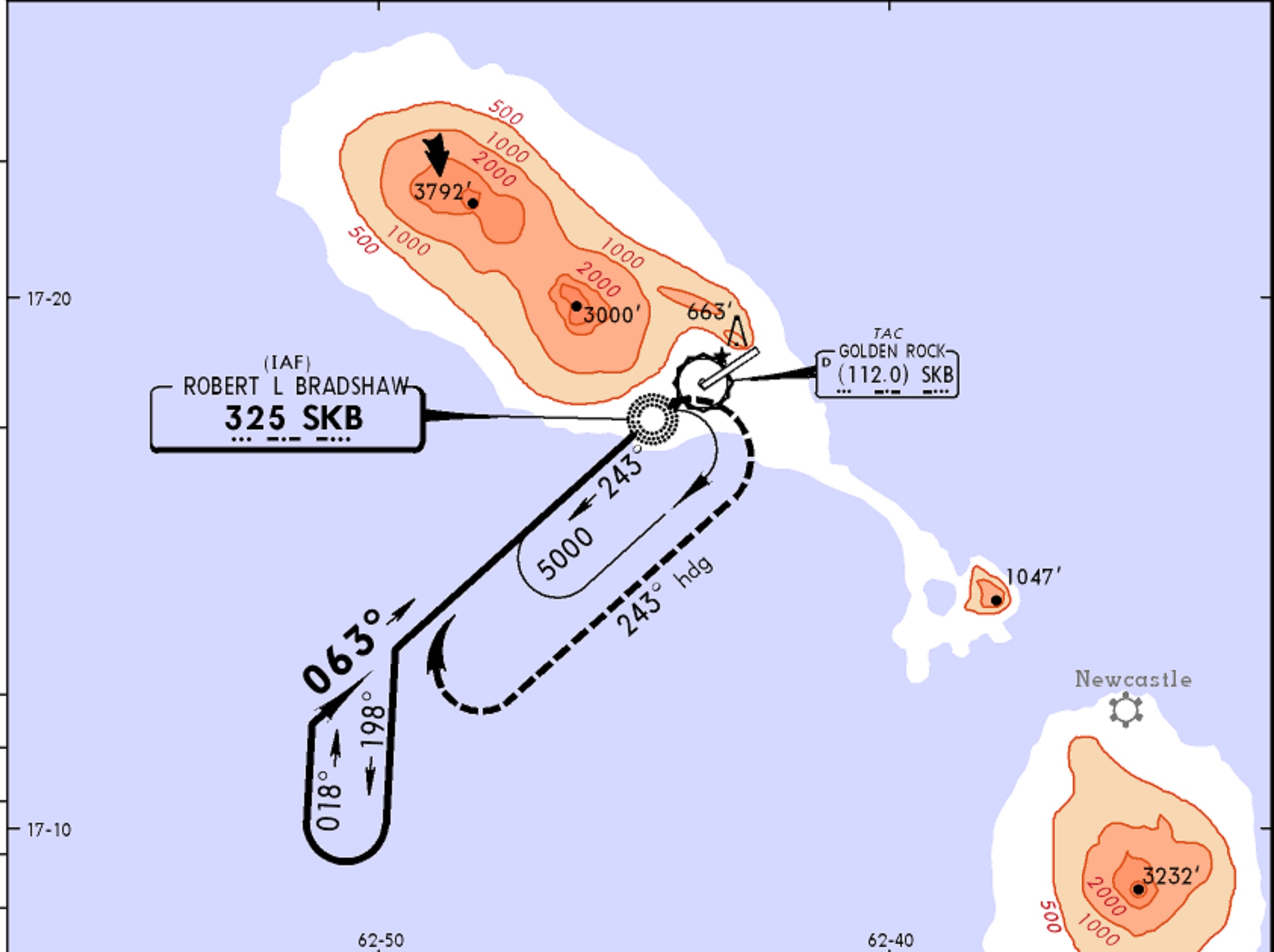


*RL BRADSHAW Approach		*RL BRADSHAW Tower		*Ground
119.6		118.3		121.9
NDB SKB 325	Final Apch Crs 063°	No FAF	MDA(H) Refer to Minimums	Apt Elev 168'
MISSED APCH: Climbing RIGHT turn to 3500' on 243° heading, then climbing RIGHT turn to 5000', return to SKB NDB and hold.				<p>MSA SKB NDB</p>
Alt Set: INCHES		Trans level: By ATC	Trans alt: 5000'	
1. Procedure not authorized when Twr inop.				



MAP at NDB	ALS PAPI-L	3500' RT	243° on hdg	5000' RT	SKB 325
------------	------------	----------	-------------	----------	---------

		CIRCLE-TO-LAND	
Not Authorized North of Rwy 07-25			
	Max Kts	MDA(H)	
A	100	1580' (1412')-1760m	
B	135	1580' (1412')-2080m	
C	180	1580' (1412')-4160m	
D	205		