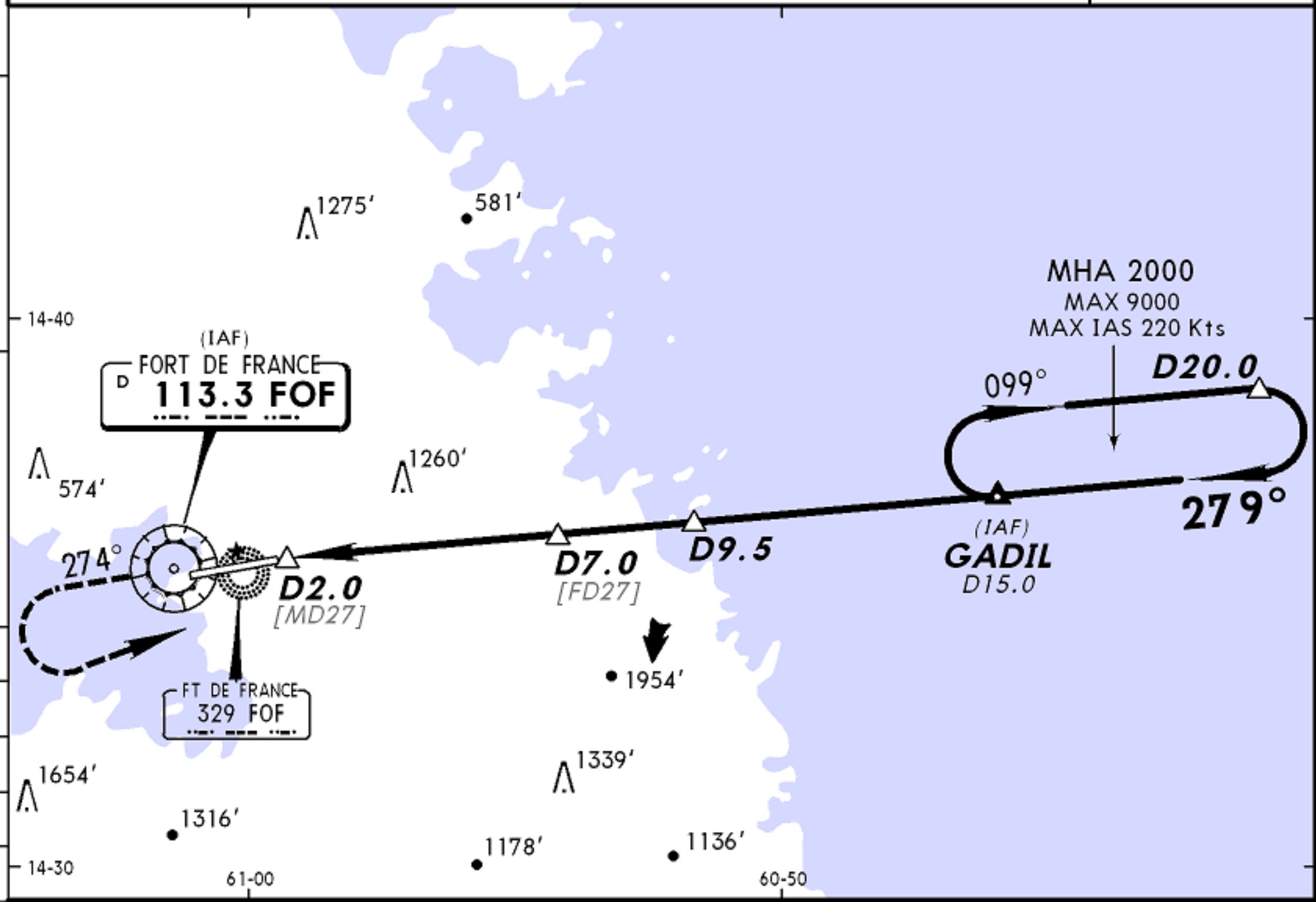


TFFF/FDF
AIME CESAIRE

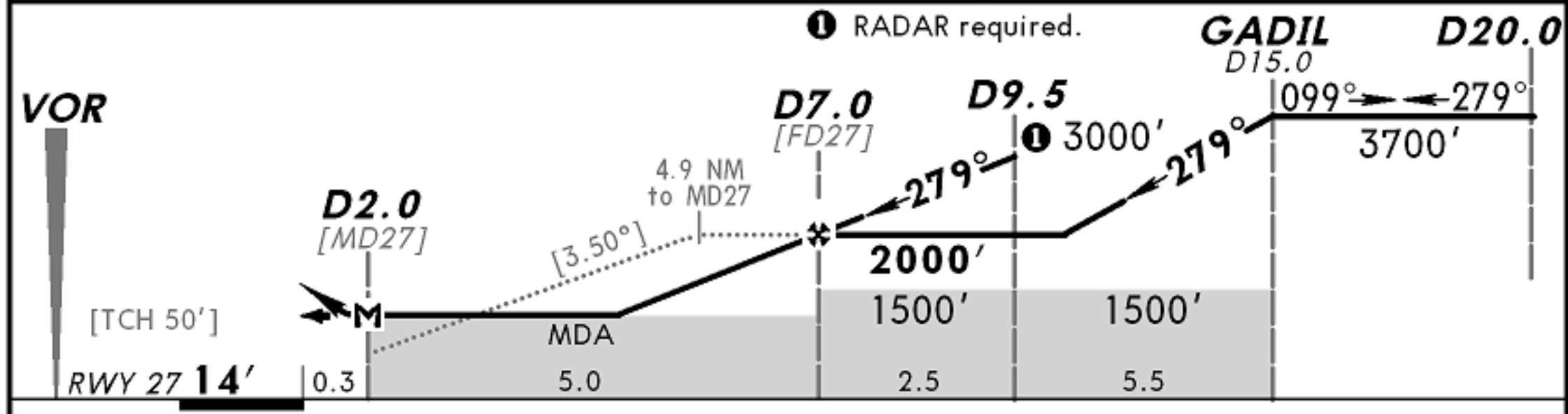
JEPPESEN
31 OCT 08 (13-3)

MARTINIQUE, MARTINIQUE
GADIL VOR DME Rwy 27

*ATIS 127.85		MARTINIQUE Approach 121.0		MARTINIQUE Tower 118.5		Ground 121.9	
VOR FOF 113.3	Final Apch Crs 279°	Minimum Alt D7.0 2000' (1986')	MDA(H) 1390' (1376')	Apt Elev 16' Rwy 27 14'			
<p>MISSED APCH: Climb inbound on FOF VOR R-099. At FOF VOR follow FOF VOR R-274 outbound. At 2500' turn LEFT to intercept and follow FOF VOR R-099 to GADIL climbing to 3700'. Do not turn before FOF VOR. Climb to 2500' prior to level acceleration.</p> <p>Alt Set: hPa Rwy Elev: 1 hPa Trans level: By ATC Trans alt: 9000'</p> <p>1. Approach not aligned with runway centerline.</p>							



FOF DME	5.0	6.0
ALTITUDE	1280'	1650'



Gnd speed-Kts	70	90	100	120	140	160	REIL PAPI-L	2500' ↑ on 113.3 R-099	FOF 113.3	FOF 113.3
Descent Gradient 6.1% or Descent angle [3.50°]	434	557	619	743	867	991				
MAP at D2.0 or FAF to MAP 5.0	4:17	3:20	3:00	2:30	2:09	1:53				

JAR-OPS						STRAIGHT-IN LANDING RWY 27		CIRCLE-TO-LAND	
						MDA(H) 1390' (1376')			
A	RVR 1500m						Max Kts.	A	
B								B	
C	RVR 2000m							C	
D								D	
						NOT APPLICABLE			