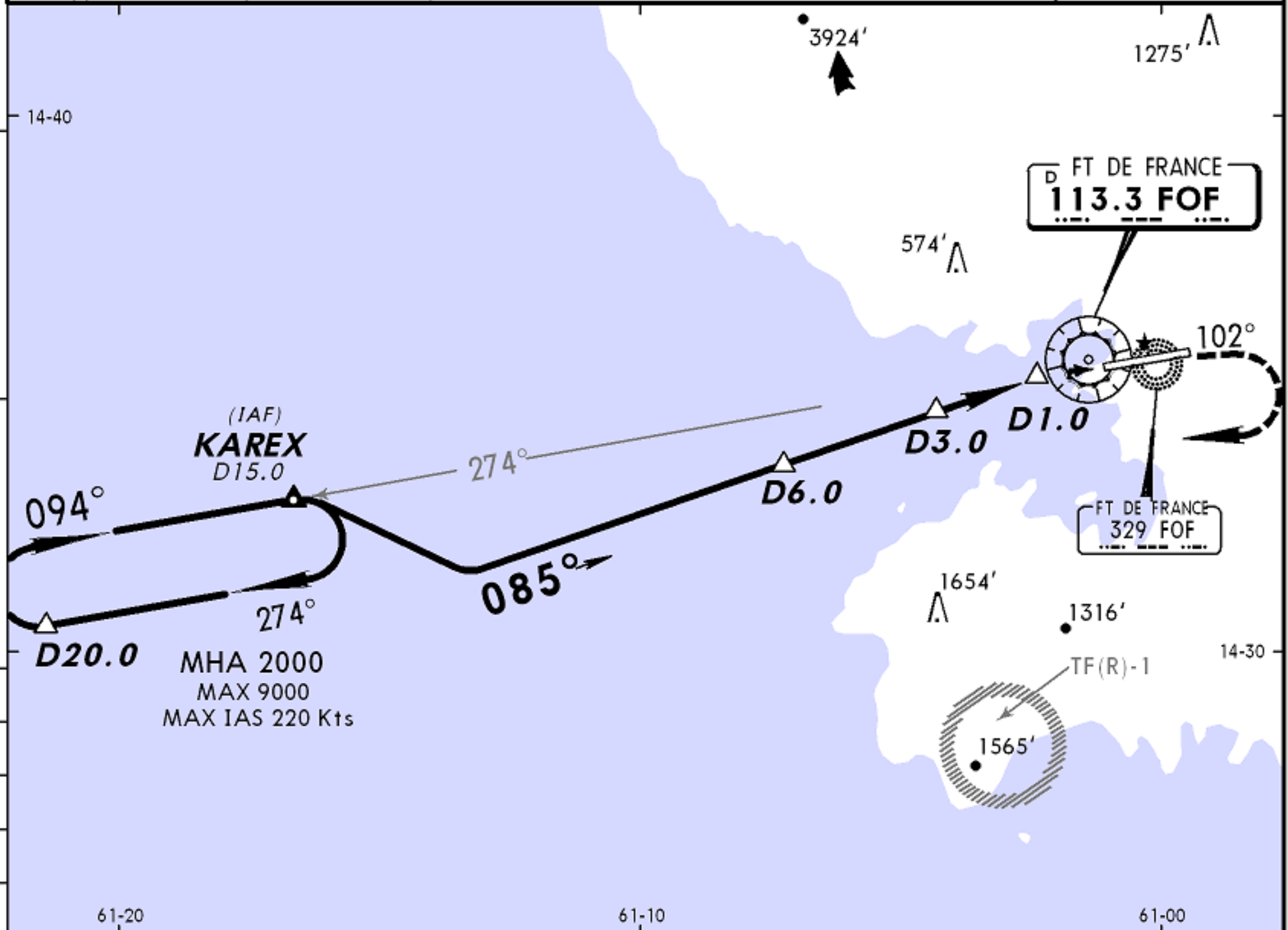


TFFF/FDF
AIME CESAIRE

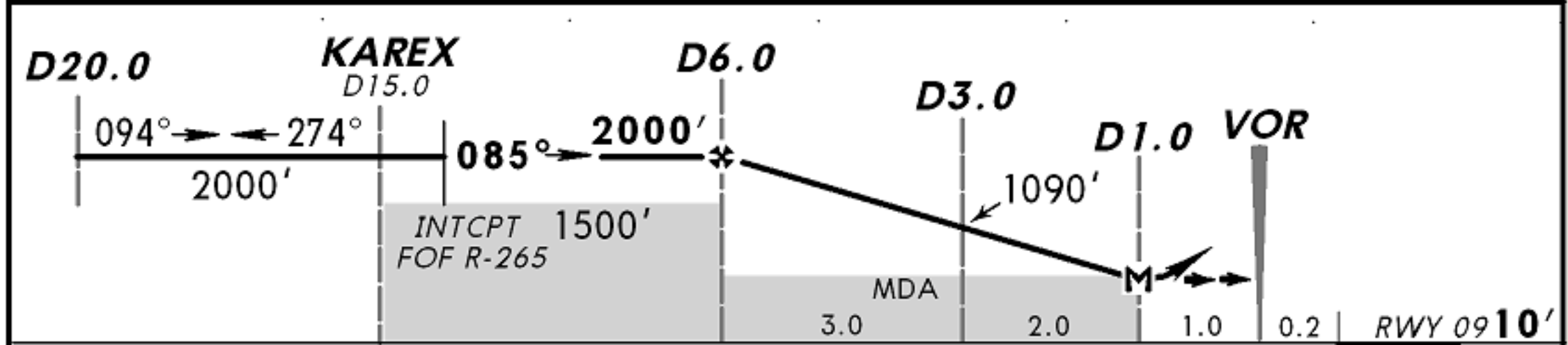
JEPPESEN
2 MAY 08
Eff 8 May (13-1)

MARTINIQUE, MARTINIQUE
KAREX VOR DME Rwy 09

*ATIS 127.85		MARTINIQUE Approach 121.0		MARTINIQUE Tower 118.5		Ground 121.9	
VOR FOF 113.3	Final Apch Crs 085°	Minimum Alt D6.0 2000' (1990')	MDA(H) Refer to Minimums	Apt Elev 16' Rwy 09 10'			
MISSED APCH: Turn RIGHT to intercept and follow outbound FOF VOR R-102. At 2500', turn RIGHT to join KAREX climbing to 3000'. Climb to 2500' prior to level acceleration.							MSA FOF VOR
Alt Set: hPa		Rwy Elev: 0 hPa		Trans level: By ATC		Trans alt: 9000'	
1. Approach not aligned with runway centerline.							



FOF DME	6.0	5.0	4.0	3.0	2.0
ALTITUDE	2000'	1720'	1410'	1090'	780'



Gnd speed-Kts	70	90	100	120	140	160	REIL PAPI-L		FOF on 113.3 R-102
Descent Gradient 5.2%	369	474	527	632	737	843			
MAP at D1.0 or FAF to MAP	5.0	4:17	3:20	3:00	2:30	2:09			

JAR-OPS STRAIGHT-IN LANDING RWY 09				CIRCLE-TO-LAND			
A: MDA(H) 580' (570') C: MDA(H) 620' (610')				Not Authorized at Night			
B: MDA(H) 600' (590') D: MDA(H) 640' (630')							
A				Max Kts	MDA(H)	VIS	
B	RVR 1500m			110	800' (784')	1500m	
C				135	1070' (1054')	1600m	
D	RVR 2000m			180	1660' (1644')	2400m	
				205	1990' (1974')	3600m	