

TFFF/FDF  
AIME CESAIRE

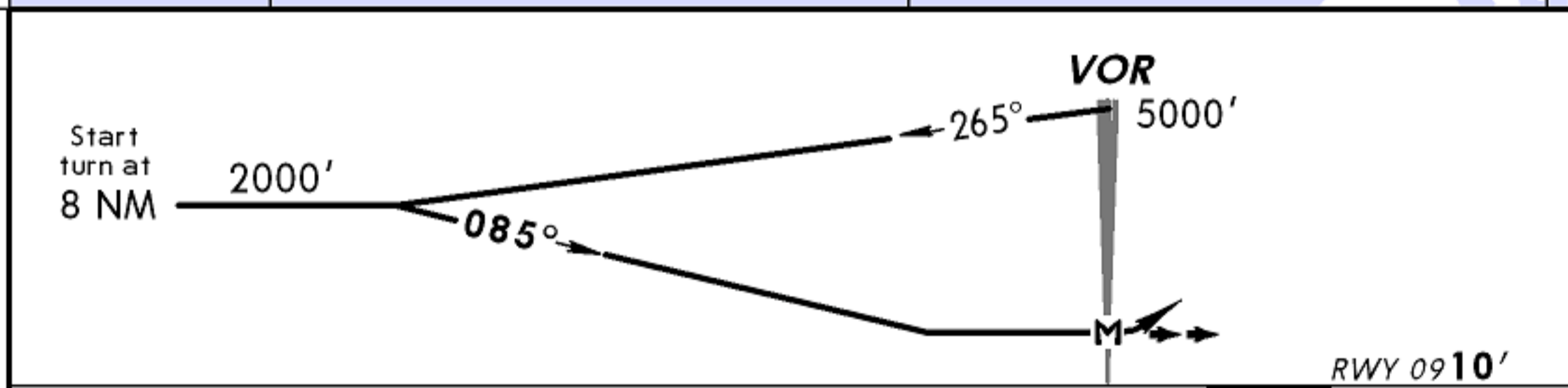
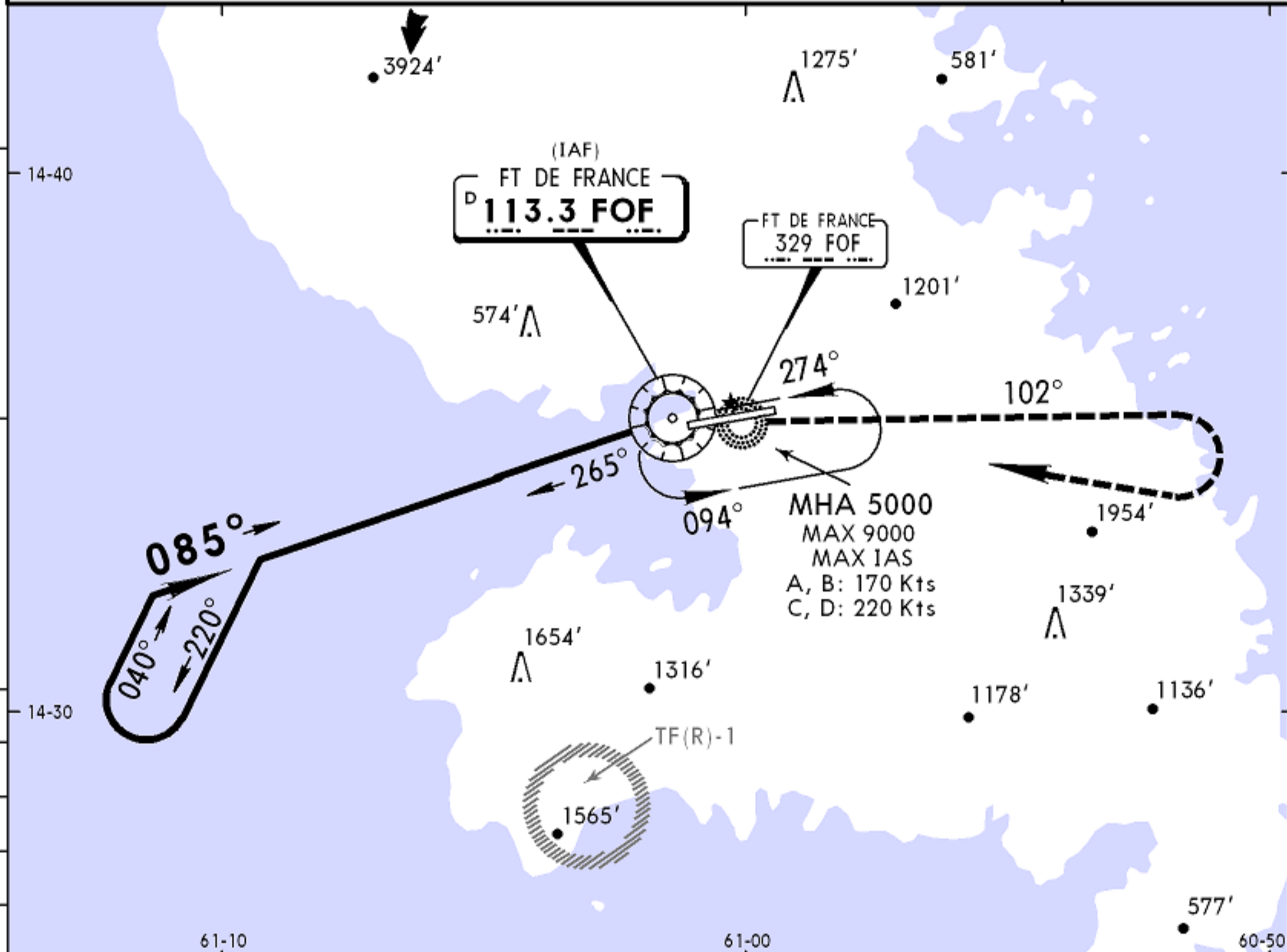
**JEPPESEN**  
2 MAY 08  
Eff 8 May

13-2

MARTINIQUE, MARTINIQUE  
VOR Rwy 09

BRIEFING STRIP™

*ATIS 127.85		MARTINIQUE Approach 121.0		MARTINIQUE Tower 118.5		Ground 121.9	
VOR FOF <b>113.3</b>	Final Apch Crs <b>085°</b>	No FAF		MDA(H) Refer to Minimums	Apt Elev 16' Rwy 09 10'		
<p><b>MISSED APCH:</b> Climb outbound on FOF VOR R-102 to 2500', turn RIGHT to enter holding pattern at FOF VOR climbing to 5000'. Do not turn before FOF VOR. Climb to 2500' prior to level acceleration.</p>							
Alt Set: hPa		Rwy Elev: 0 hPa		Trans level: By ATC		Trans alt: 9000'	
1. Approach not aligned with runway centerline.							MSA FOF VOR



Gnd speed-Kts	70	90	100	120	140	160	REIL PAPI-L	2500' ↑ FOF on 113.3 R-102
Descent Gradient 5.2%	369	474	527	632	737	843		
MAP at VOR								

<b>JAR-OPS</b> STRAIGHT-IN LANDING RWY 09				CIRCLE-TO-LAND			
A: MDA(H) <b>740'</b> (730') C: MDA(H) <b>780'</b> (770')				Not Authorized at Night			
B: MDA(H) <b>750'</b> (740') D: MDA(H) <b>800'</b> (790')							
A				Max Kts	MDA(H)	VIS	
B	RVR 1500m			110	800' (784')	1500m	
C				135	1070' (1054')	1600m	
D	RVR 2000m			180	1660' (1644')	2400m	
				205	1990' (1974')	3600m	