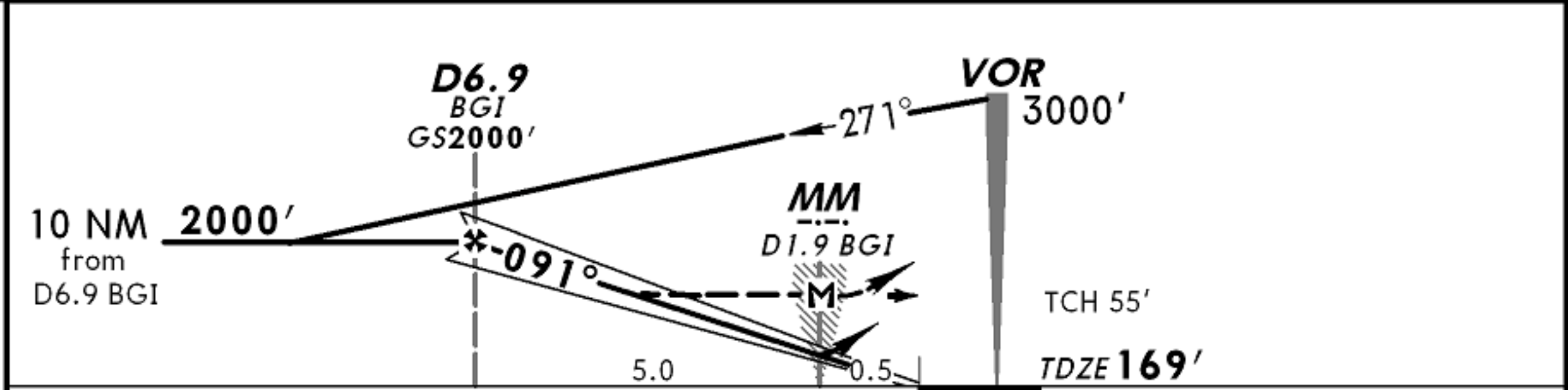
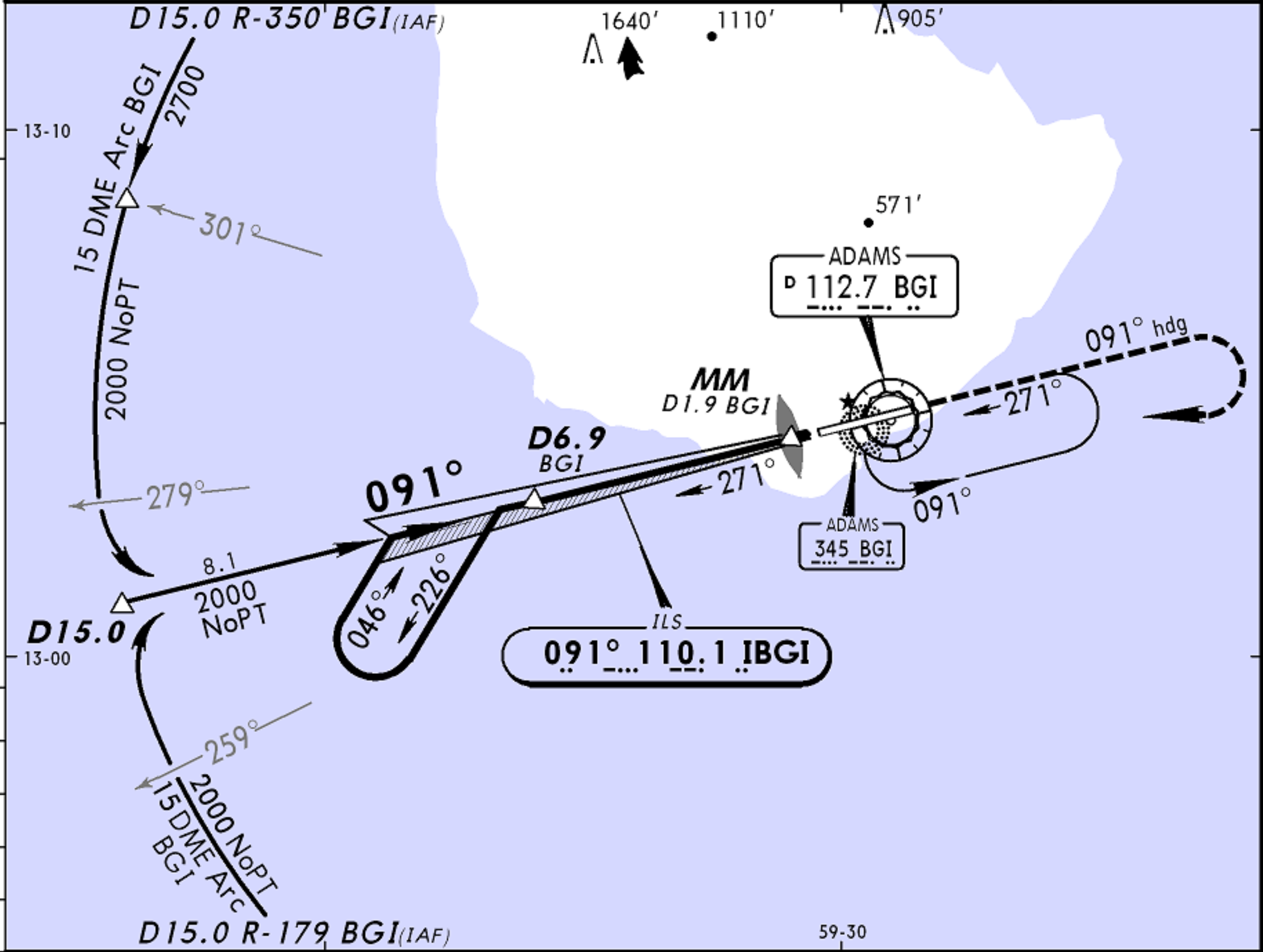


ATIS 132.72	Radar vectoring thru ADAMS Radar 120.7    121.2    128.85			ADAMS Approach (R) 129.35	ADAMS Tower 118.7	Ground 121.9
LOC IBGI 110.1	Final Apch Crs 091°	GS D6.9 2000' (1831')	ILS DA(H) 369' (200')	Apt Elev 169' TDZE 169'		3000'  MSA BGI VOR
<p><b>MISSED APCH:</b> Climb to 3000' on heading 091°, then turn RIGHT and proceed direct to BGI VOR and hold. <b>GS out:</b> If MM inoperative, initiate missed approach at D1.9 BGI VOR.</p> <p>Alt Set: hPa (IN on req)      TDZ Elev: 6 hPa      Trans alt: 3000'</p> <p>Trans level: FL 40 or FL 45 as assigned by ATC.</p>						



Gnd speed-Kts	70	90	100	120	140	160	HIALS PAPI 3000' on 091° hdg RT BGI 112.7
GS	3.00°	377	484	538	646	753	
MAP at MM/D1.9 BGI							

STRAIGHT-IN LANDING RWY 09				CIRCLE-TO-LAND	
ILS		LOC (GS out)		Not Authorized North of Rwy 09-27	
DA(H) 369' (200')		MDA(H) 520' (351')		MDA(H)	
FULL	ALS out	ALS out	ALS out	Max Kts	
A				100	880' (711') - 1.6 km
B				135	
C	0.8 km	1.2 km	0.8 km	180	980' (811') - 4.0 km
D			1.2 km	205	980' (811') - 4.4 km