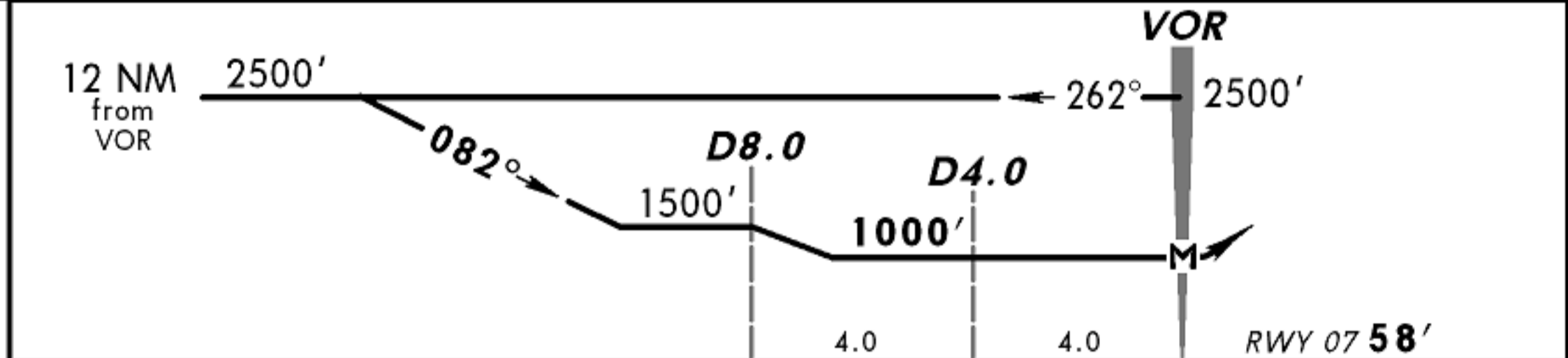
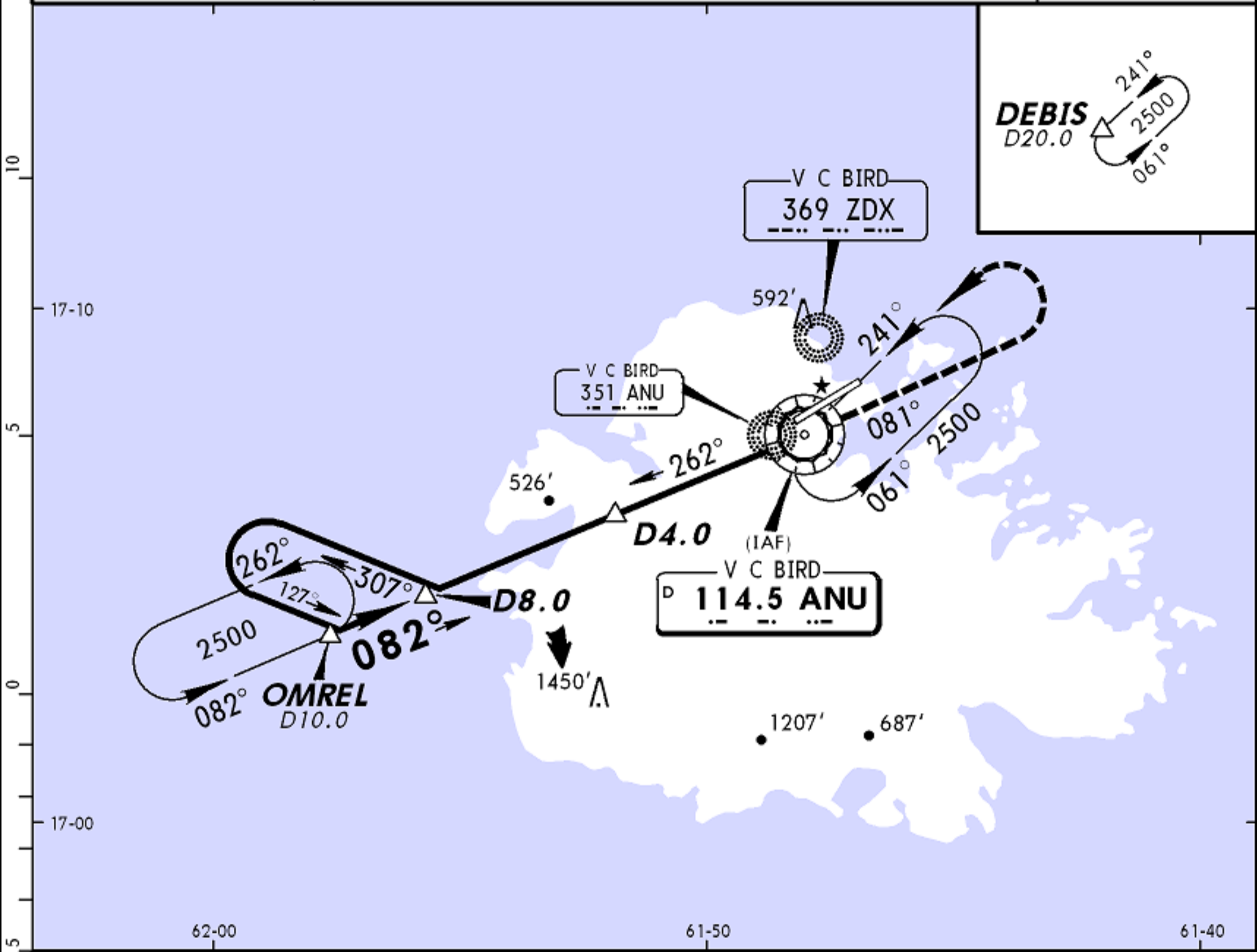


BRIEFING STRIP™

*ATIS 114.5	V C BIRD Approach 119.1	V C BIRD Tower 1000-2200 UTC 118.2	2200-1000 UTC 119.1	Ground 121.9
VOR ANU 114.5	Final Apch Crs 082°	Minimum Alt D4.0 1000' (942')	MDA(H) 1000' (942')	Apt Elev 60' RWY 07 58'
MISSED APCH: LEFT turn outbound on ANU VOR R-081 climbing to 1500', then LEFT climbing turn to return to ANU VOR at 2500' and hold, or as directed by ATC.				2500'
Alt Set: hPa	Rwy Elev: 2 hPa	Trans level: FL 40	Trans alt: 2500'	MSA ZDX NDB



MAP at VOR	HIALS	ANU 1500'
	PAPI	on 114.5 R-081
	LT	↑

STRAIGHT-IN LANDING RWY 07		CIRCLE-TO-LAND	
MDA(H) 1000' (942')		MDA(H)	
ALS out		Max Kts	
A	1600m	100	1000' (940') - 1600m
B	1600m	135	1000' (940') - 2000m
C	2800m	180	1000' (940') - 4000m
D	3200m	205	1000' (940') - 4400m

1770' (1710') South of Rwy 07/25