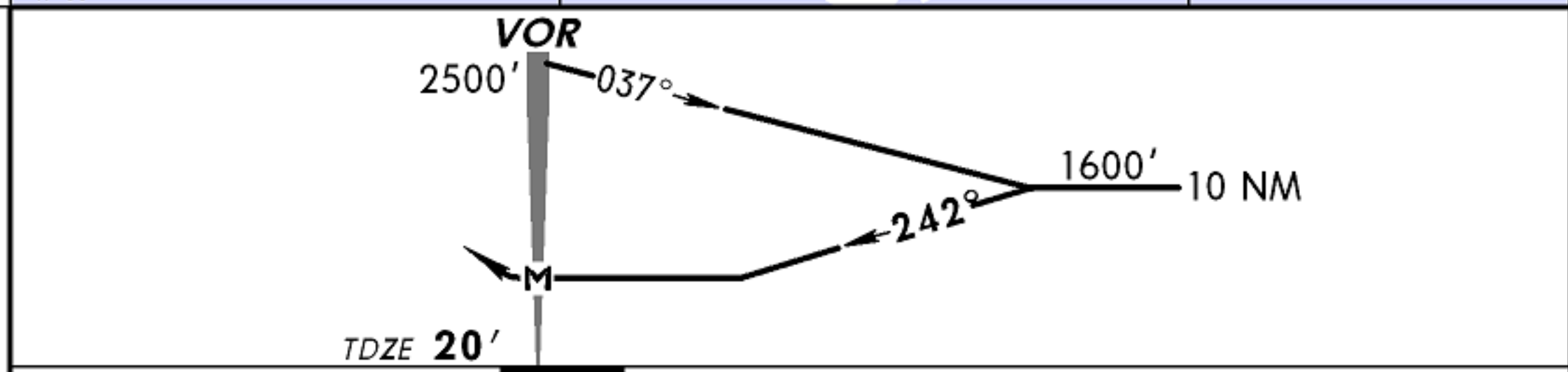
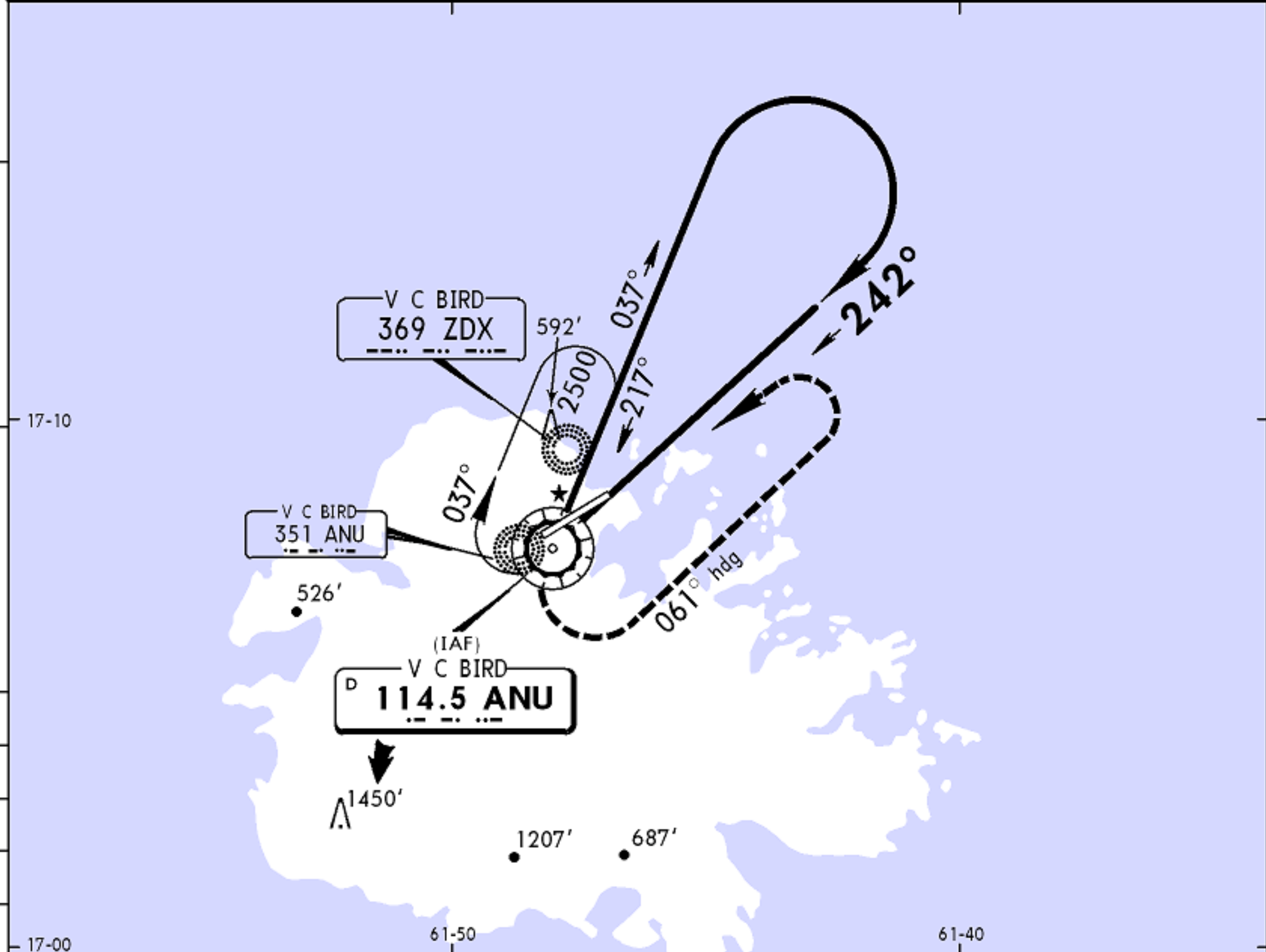


*ATIS 114.5	V C BIRD Approach 119.1	V C BIRD Tower 1000-2200 UTC 118.2	2200-1000 UTC 119.1	Ground 121.9
VOR ANU 114.5	Final Apch Crs 242°	No FAF	MDA(H) 700' (680')	Apt Elev 60' TDZE 20'
MISSED APCH: LEFT climbing turn to a 061° heading, climb to 2000' then LEFT turn to return to ANU VOR at 2500' and hold, or as directed by ATC.				2500'
Alt Set: hPa	TDZ Elev: 1 hPa	Trans level: FL 40	Trans alt: 2500'	



MAP at VOR				PAPI-L	LT	061° hdg	2000' ↑
------------	--	--	--	--------	----	-------------	------------

STRAIGHT-IN LANDING RWY25		CIRCLE-TO-LAND	
MDA(H) 700' (680')		South of Rwy 07/25	North of Rwy 07/25
A	1600m	Max Kts 100 MDA(H) 700' (640')-2800m	MDA(H) 890' (830')-2800m
B	2800m	135 740' (680')-2800m	990' (930')-3600m
C	3200m	180 930' (870')-3600m	1000' (940')-4000m
D		205 1770' (1710')-4000m	