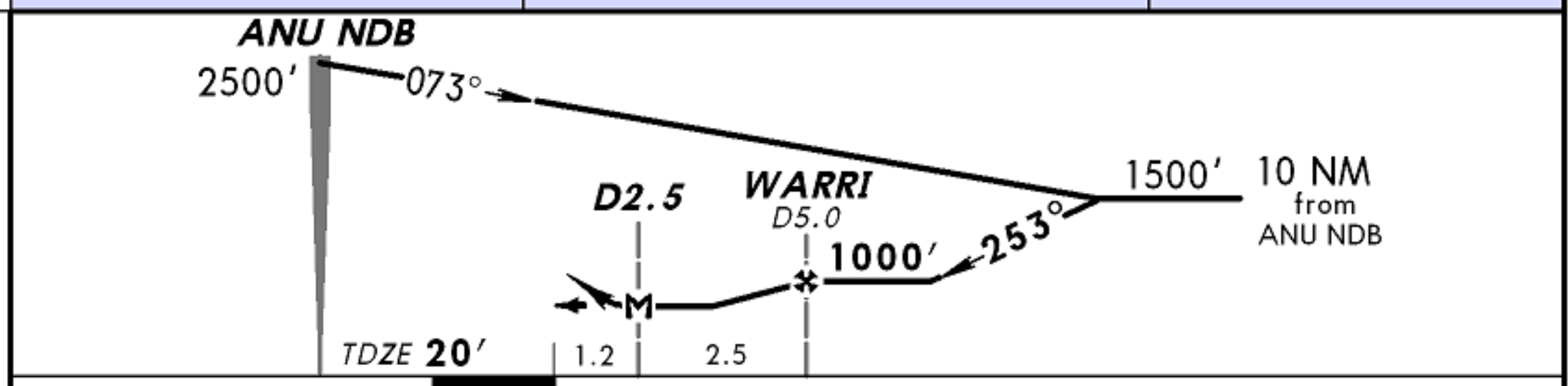
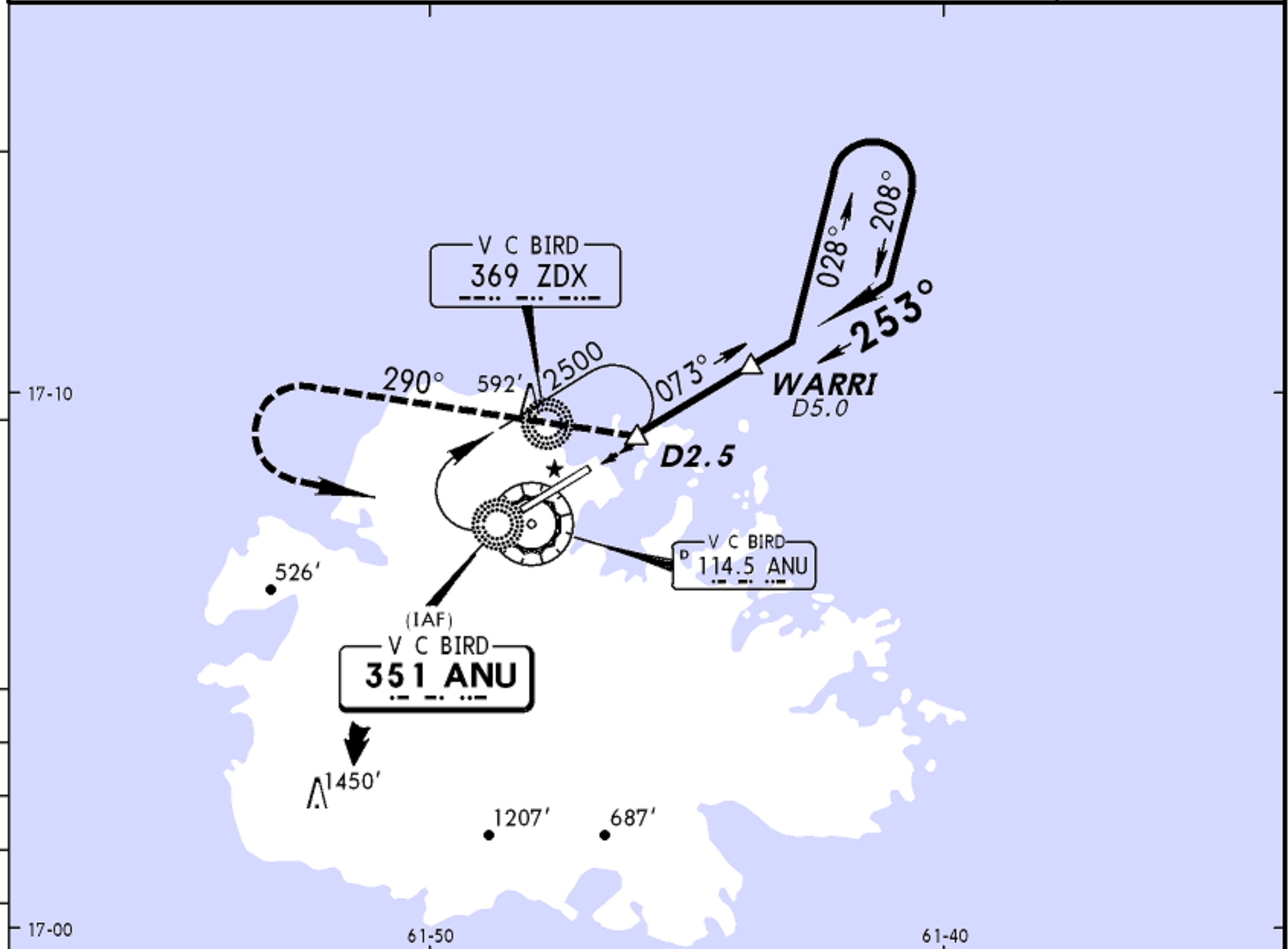


*ATIS 114.5	V C BIRD Approach 119.1	V C BIRD Tower 1000-2200 UTC 118.2		2200-1000 UTC 119.1	Ground 121.9
NDB ANU 351	Final Apch Crs 253°	Minimum Alt WARRI 1000' (980')	MDA(H) 540' (520')	Apt Elev 60' TDZE 20'	2500' MSA ZDX NDB
MISSED APCH: RIGHT turn to track 290° climbing to 2500', then LEFT turn to ANU NDB and hold, or as directed by ATC.					
Alt Set: hPa	TDZ Elev: 1 hPa	Trans level: FL 40	Trans alt: 2500'		



				PAPI-L	RT	290°	2500'
MAP at D2.5							

STRAIGHT-IN LANDING RWY 25		CIRCLE-TO-LAND	
MDA(H) 540' (520')		South of Rwy 07/25	North of Rwy 07/25
A	1600m	Max Kts MDA(H) 700' (640') - 1600m	MDA(H) 890' (830') - 1600m
B	2000m	135 740' (680') - 1600m	990' (930') - 2800m
C	2400m	180 930' (870') - 2800m	1000' (940') - 3600m
D		205 1770' (1710') - 3600m	